



## The World's Fastest Wireless Transmission Projectors

### 輕輕鬆鬆無線簡報 (PT-LB50NTU)

- 全世界最快速的資料傳輸\*1
- 無線PC影像/聲音傳輸\*2
- 豐富的無線傳輸功能, 包含第二畫面傳輸及16畫面索引模式
- 簡單, 友善的設定



由於不需要使用連接線, 所以投影機的設定是如此地快速及簡單, 你可以擺放在任何位置. Wireless Manager ME 3.0版的軟體增快了5倍的傳輸速度(和以前的機種相比較)\*6. 即使在傳輸影像檔案時, 你也可以得到快速, 順暢, 毫無拘束的傳輸資料\*2. 你可以把Wireless Manager複製到記憶卡中, 帶著走.

### 第二代光感應技術

- 提升50%的影像效果\*3
- 在光線明亮的室內亦可展現生動色彩
- 具自動操作功能的环境光源感應器 (ALS)



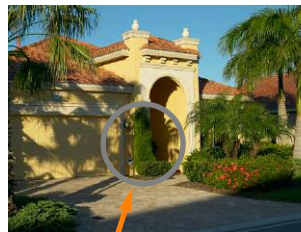
### 高效率及超可攜

- 亮度2,000 lumens
- 超輕巧: 1.8 kg/1.9 kg\*4
- 輕巧而簡潔的設計: 只有57公厘厚\*5

### 快速操作

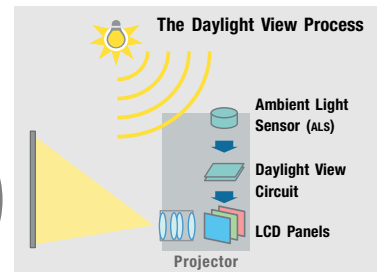
- 2秒快速啟動
- 自動搜尋
- 全自動即時梯形修正
- 操作小幫手
- 直接關閉電源 (Direct power off)

無線簡報提詞 (第二畫面) 功能  
這允許你能傳輸並不顯示在PC螢幕上的內容. 例如: 你可以在投射PowerPoint簡報的同時, 也在PC的螢幕上顯示文字檔\*8. 你也可以擁有許多其他便利的無線傳輸功能. 例如指定區域畫面傳輸及最多16個PC的同時顯示的multi-live模式.



### Daylight View 2

內建的感應器會偵測環境光線強度的變化, 同時也根據環境來做最佳化色彩補償. 使得影像效果如同亮度增加150%\*3



\*1 As of February 7, 2006, according to our own evaluation of wireless transmission from PC to projector. Wireless projection function is featured on the PT-LB50NTU only.  
\*2 Content and DVDs set with DRM (Digital Rights Management) cannot be transmitted.  
\*3 Comparison with Daylight View 2 turned On and Off, using an 80-inch screen and ordinary meeting room lighting of 400 lux. (Projector: PT-LB60NTU, screen gain: 2.6)  
\*4 4.0 lbs/1.8 kg for the PT-LB50U and PT-LB50SU; 4.2 lbs/1.9 kg for the PT-LB50NTU.  
\*5 Legs and protrusions not included.  
\*6 PT-LB20NTU  
\*7 Transmission will be slower than transmission with a computer that has the software installed. Also, certain functions may not be available.  
\*8 With Wireless Manager ME 3.0, you can use the projector screen as a secondary monitor for the PC. In this setup, Microsoft® PowerPoint® must be set to "Show Presenter View."

背視圖



規格

<p><b>電源</b> 耗電量</p> <p>LCD面板 Panel size Display method Drive method Pixels</p> <p><b>PT-LB50NTU/LB50U</b></p> <p><b>PT-LB50SU</b></p> <p><b>Pixel configuration</b></p> <p><b>鏡頭</b></p> <p><b>燈泡</b> 色彩 亮度 C. C. R 對比 掃描頻率</p> <p><b>RGB</b></p> <p><b>YPbPr</b></p> <p><b>S-Video/Video</b></p> <p><b>投影尺寸</b></p> <p><b>投射距離</b> <b>Optical axis shift</b> <b>梯形修正</b></p>	<p>100–240 V AC, 50/60 Hz 240 W (Approx. 2 W in standby mode with fan stopped) 4:3 aspect ratio, micro lens array 0.6" (15.24 mm) diagonal Transparent LCD panel (x 3, R/G/B) Active matrix</p> <p>786,432 (1,024 x 768) x 3, total of 2,359,296 pixels 480,000 (800 x 600) x 3, total of 1,440,000 pixels</p> <p>Stripe</p> <p>Manual zoom (1:1–1:1.2), manual focus, F 1.6–1.9, f 18.8–22.6 mm 165 W UHM™ lamp Full color (16,777,216 colors) 2,000 lumens 85% 400:1*1 (full on/full off)</p> <p>Horizontal: 15–91 kHz, Vertical: 50–85 Hz</p> <p>480i (525i): fh 15.75 kHz; fv 60 Hz 576i (625i): fh 15.63 kHz; fv 50 Hz 480p (525p): fh 31.5 kHz; fv 60 Hz 576p (625p): fh 31.25 kHz; fv 50 Hz 720p (750p): fh 45 kHz; fv 60 Hz 1080i (1125i): fh 33.75 kHz; fv 60 Hz 1080i (1125i): fh 28.125 kHz; fv 50 Hz</p> <p>NTSC, NTSC4.43, PAL-M, PAL60: fh 15.75 kHz; fv 60 Hz PAL, SECAM, PAL-N: fh 15.63 kHz; fv 50 Hz</p> <p>33–300 inches/838–7,620 mm diagonally 3'7"–35'1" (1.1 m–10.7 m) 6:1 (fixed)</p> <p>Vertical: ±30°</p>	<p><b>螢幕選單</b></p> <p><b>安裝</b></p> <p><b>內建喇叭</b></p> <p><b>介面</b></p> <p><b>PC 1 IN</b></p> <p><b>RGB signal</b></p> <p><b>YPbPr signal</b></p> <p><b>PC 2 IN/PC 1 OUT</b></p> <p><b>RGB signal</b></p> <p><b>YPbPr signal</b></p> <p><b>VIDEO IN</b></p> <p><b>S-VIDEO IN</b></p> <p><b>AUDIO IN</b></p> <p><b>PC AUDIO IN</b></p> <p><b>AUDIO OUT</b></p> <p><b>SERIAL</b></p> <p><b>Power cord length</b></p> <p><b>Cabinet material</b></p> <p><b>外型尺寸 (W x H x D)</b></p> <p><b>重量</b></p> <p><b>操作環境</b></p> <p><b>Temperature</b></p> <p><b>Humidity</b></p>	<p>17 languages: English, French, German, Spanish, Italian, Korean, Russian, Chinese, Japanese, Swedish, Norwegian, Danish, Portuguese, Polish, Hungarian, Czech, and Thai 前投/背投,懸掛/桌面 (螢幕選單設定) 1-9/16" x 25/32" (4 x 2 cm) x 1 (oval), 1.0 W (monaural) output power</p> <p>D-sub HD 15-pin x 1 R, G, B: 0.7 Vp-p, 75 ohms, Sync on green: 1.0 Vp-p, 75 ohms HD/SYNC, VD: TTL (positive/negative polarity compatible) Y: 1.0 Vp-p (including sync signal), 75 ohms; Pb, Pr: 0.7 Vp-p, 75 ohms</p> <p>D-sub HD 15-pin x 1 (input/output selectable using on-screen menu) R, G, B: 0.7 Vp-p, 75 ohms, Sync on green: 1.0 Vp-p, 75 ohms HD/SYNC, VD: TTL (positive/negative polarity compatible) Y: 1.0 Vp-p (including sync signal), 75 ohms; Pb, Pr: 0.7 Vp-p, 75 ohms RCA pin x 1, 1.0 Vp-p, 75 ohms Mini DIN 4-pin x 1, Y: 1.0 Vp-p, C: 0.286 Vp-p, 75 ohms</p> <p>RCA (L, R) x 1, 0.5 Vrms (for VIDEO/S-VIDEO) M3 (L, R) x 1, 0.5 Vrms M3 (L, R) x 1, 0–2.0 Vrms (variable) Mini DIN 8-pin x 1 (RS-232C) 6'7" (2 m) Moulded material (ABS/PC) 11-11/16" x 2-1/4" x 8-1/4" (297 x 57 x 210 mm)</p> <p>4.2 lbs. (1.9 kg) 4.0 lbs. (1.8 kg)</p> <p>32°–104°F (0°–40°C) 20%–80% (no condensation)</p>	<p><b>遙控器</b></p> <p><b>Power supply</b> <b>Operation range**</b></p> <p><b>Dimensions (W x H x D)</b></p> <p><b>Weight</b></p> <p><b>Wireless LAN (PT-LB50NTU)</b></p> <p><b>Standard</b> <b>Modulation</b></p> <p><b>IEEE802.11b</b></p> <p><b>IEEE802.11g</b></p> <p><b>Transmission system</b></p> <p><b>IEEE802.11b</b></p> <p><b>IEEE802.11g</b></p> <p><b>Transmission speed</b></p> <p><b>IEEE 802.11b</b> <b>IEEE 802.11g</b></p> <p><b>Operation range**</b> <b>Frequency range</b> <b>Channels</b></p>	<p>3 V DC (button battery x 1) Approx. 23 feet (7 m) when operated from directly in front of the signal receptor</p> <p>2-1/16" x 4-27/32" x 13/16" (52 x 123 x 21 mm) 2.6 ozs. (74 g) (including batteries)</p> <p>IEEE802.11b/g</p> <p>Direct sequence spread spectrum (DS-SS) system Orthogonal frequency division multiplex (OFDM) system</p> <p>CCK (11/5.5 Mbps), DQPSK (2 Mbps), DBPSK (1 Mbps) 64-QAM (54/48 Mbps), 16-QAM (36/24 Mbps), QPSK (18/12 Mbps), BPSK (9/6 Mbps)</p> <p>11 Mbps, 5.5 Mbps, 2 Mbps, 1 Mbps 54 Mbps, 48 Mbps, 36 Mbps, 24 Mbps, 18 Mbps, 12 Mbps, 9 Mbps, 6 Mbps Approx. 98'5" (30 m) 2,412 MHz–2,462 MHz 1–11 ch</p>
			<p><b>標準配件</b></p> <ul style="list-style-type: none"> <li>• 電源線</li> <li>• 無線遙控器</li> <li>• 電池</li> <li>• VGA線</li> <li>• 攜行袋</li> <li>• Wireless Manager ME 3.0 (CD-ROM)*3</li> </ul> <p><b>選購配件</b></p> <p>ET-LAB50 燈泡 ET-RM300 全功能遙控器 ET-ADSER Serial adapter (DIN 8-pin/D-sub 9-pin)</p>		

\*1: In AI mode.  
\*2: Operation range differs depending on the environment.  
\*3: For the PT-LB50NTU only.

NOTES ON USE

- The projector uses a high-voltage mercury lamp that contains high internal pressure. This lamp may break, emitting a large sound, or fail to illuminate, due to impact or extended use. The length of time that it takes for the lamp to break or fail to illuminate varies greatly depending on individual lamp characteristics and usage conditions.
- The brightness of the lamp will gradually decrease with use.
- The lamp, LCD panel, polarizing plate, and polarizing beam splitter (PBS) are consumable parts. These parts may need to be replaced during the guarantee period if the projector is used for six or more hours per day.
- The replacement cycle of the LCD panel, polarizing plate, and polarizing beam splitter (PBS) will be shortened if the projector is subjected to continuous use for six or more hours. Likewise, the replacement cycle of the lamp will be shortened if the power is frequently turned on and off or the projector is subjected to continuous use for 10 or more hours.
- Interruptions may occur in the wireless connection due to signal interference or PC conditions.

To use wireless functions, a PC is required that meets the conditions given below:

- OS:** Microsoft® Windows® 2000 Professional, Windows® XP Professional, Windows® XP Home Edition
- CPU:** Pentium® III or higher, or other compatible processor (1 GHz or higher is recommended).
- Memory:** 256 MB or more
- Free hard disk space:** 60 MB or more
- CD-ROM drive:** CD-ROM drive or DVD drive
- Wireless LAN:** IEEE 802.11b/g compatible (built-in wireless LAN system or external IEEE 802.11b/g LAN card must be installed and running normally.) However, some IEEE 802.11g/b wireless LAN may not allow connection to the projector.
- Web browser:** Internet Explorer 6.0 or later, Netscape Communicator 7.0 or later
- Direct X:** DirectX® 8.1b or later must be installed.

Operation is not guaranteed for all computers that meet the above conditions

Panasonic

Weights and dimensions shown are approximate. Specifications are subject to change without notice. Product availability differs depending on region and country. This product may be subject to export control regulations. UHM is a trademark of Matsushita Electric Industrial Co., Ltd. VGA and XGA are trademarks of International Business Machines Corporation. Windows and PowerPoint are either registered trademarks or trademarks of Microsoft Corporation in the United States and/or other countries. All other trademarks are the property of their respective trademark owners. Projection images simulated.

